

Shanghai with Disneyland 4D3N Tour

(4 Star Hotel & Non mandatory shopping store)

Group 1: **OCT17-OCT20,2025** Group 2: **OCT24-OCT27,2025** Group 3: **OCT26-OCT29,2025**
 Group 4: **OCT27-OCT30,2025** Group 5: **NOV07-OCT10,2025** Group 6: **NOV21-NOV24,2025**
 Group 7: **NOV28-DEC01,2025** Group 8: **DEC05-DEC08,2025** Group 9: **DEC07-DEC10,2025**

Date	City	Itinerary	Meals	Hotel
Day 1	Manila - Shanghai AIR/BUS	ETA: PR336 MNL-PVG 1040/1430 or PR338(0615/0950) <ul style="list-style-type: none"> Arrive Shanghai, meet and greet the tour guide at the airport. Free time at Nanjing Road Shopping Street Visit Pop Mart Flagship Store Visit The Bund Option tour 1: Cruise on Huangpu River--USD30/PAX <ul style="list-style-type: none"> Dinner then transfer to hotel and check in 	X/X/D	4* Shanghai Holiday Inn Express 20sqm or similar
Day 2	Shanghai BUS	<ul style="list-style-type: none"> Breakfast at hotel Visit Shanghai Chenghuang Temple Visit Yu Garden shopping district Visit Lujiazui Skyscrapers(Three Towers) Visit Zhangyuan Visit The Oriental Pearl Tower(Photo Stop only) Transfer back to hotel 	B/L/X	Same as above B/L/X
Day 3	Shanghai BUS	<ul style="list-style-type: none"> Breakfast at hotel Whole day enjoy at Shanghai Disneyland by pax own (including weekday ticket only) *An additional fee of USD35/PAX will be charged on Chinese weekends and holidays *Enjoy lunch and dinner by own inside Disneyland, driver guide not go inside together. <ul style="list-style-type: none"> After fireworks show, transfer back to hotel 	B/X/X	Same as above B/X/X
Day 4	Shanghai- Manila BUS/AIR	<ul style="list-style-type: none"> Breakfast at hotel and check out Free & easy until transfer to airport for departure ! (include hotel-airport one way transfer only) <hr/> Option tour2: The Oriental Pearl Tower (2nd ball) + BICESTER Village Shanghai--USD50/PAX <ul style="list-style-type: none"> Transfer to airport for departure ETD: PR337 PVG-MNL 1600/1950	B/X/X	Sweet Home B/X/X

Quotation-Based on 20Paxs

Travel Date	Adults (Twin sharing)	Single Supplement	Child no bed (2-6 years old)	Tip
OCT17-OCT20,2025 OCT24-OCT27,2025 OCT26-OCT29,2025 OCT27-OCT30,2025 NOV07-OCT10,2025 NOV21-NOV24,2025 NOV28-DEC01,2025 DEC05-DEC08,2025 DEC07-DEC10,2025	649USD/PAX	150USD/PAX	599USD/PAX	USD20/PAX

Remarks:

- 15 Adult based on 29 seats medium bus, 20 Adult based on 39 seats medium bus.
- Pls kindly noted that based on local rule, Kids 6 years old and above, should with bed, quotation same as adult.
- This is a Non Mandatory visiting shops Tours
- Excluded Option tour:

Option tour 1: Cruise on Huangpu River--USD30/PAX

Option tour 2: The Oriental Pearl Tower (2nd ball) + BICESTER Village Shanghai--USD50/PAX

- Disneyland weekend or Holiday surcharge excluded: **USD35/PAX**

Holiday: (Oct 01-07, Dec 24& 25, 2025) and Weekend: Sat & Sun

INCLUSIONS	EXCLUSIONS
<ul style="list-style-type: none"> ● International airfare and Airport tax & Terminal fee. ● 23KG(1pc) checked-in luggage and 7KG hand carry-on luggage. ● Private bus with English speaking tour guide(1 bus, 1 tour guide) ● Sightseeing tours as specified above included all entrance fee needed ● 3 nights' room accommodation at choice hotel with daily hotel breakfast base on twin sharing (No extra bed) ● One complimentary bottle of water per person per day ● Meals: 3 Breakfasts at hotel + 1 Lunch + 1 Dinners 	<ul style="list-style-type: none"> ● Expenses of a personal nature like telephone calls, mini bar, etc. ● Single supplement ● China Individual Visa ● Travel insurance ● Tips for driver and guide: USD20/PAX(collected with tour fee) ● The Philippine Travel tax: USD30/PAX(collected with tour fee) ● China Group Visa: USD40/PAX(collected with tour fee) ● Disneyland weekend or Holiday surcharge excluded: USD35/PAX ● Option Tour -80USD/PAX ● Option tour 1: Cruise on Huangpu River -USD30/PAX ● Option tour 2: Visit The Oriental Pearl Tower (2nd ball-263m subjective light layer) + Bicester Village -USD50/PAX

Important Notice

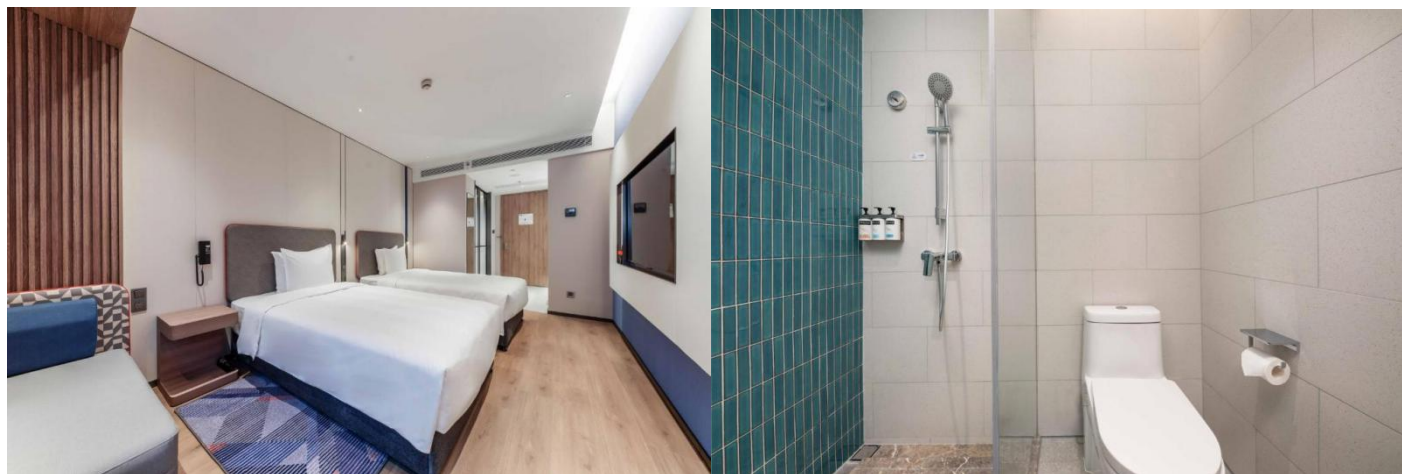
*Down payment: **Non-Refundable/Unchangeable USD300/PAX** in 3 days once confirmed to join in

*The rest payment will pay one month before departure

*The rate based on twin sharing, less triple sharing rooms, if triple room not available, we will arrange one twin bed room with one single bed room (the person use single bed room will require single supplement)

Flight Information

FLIGHT NO.	FROM	TO	ETD	ETA
PR336 OR PR338	MNL	PVG	10:40/06:10	14:30/09:50
PR337	PVG	MNL	16:00	19:45



4* Shanghai Holiday Inn Express 20sqm or similar