



# Shanghai+Hangzhou+Wuzhen 5D4N Tour

Travel Date: OCT25-29,2025

Travel Date: OCT26-30,2025

## Jiangnan Water Towns and Cultural Journey -(Non-Shopping Tour-5Star Hotel)



DATE	CITY	ITINERARY	MEAL	HOTEL
D1	Manila - Shanghai - Hangzhou  Air / Bus	<b>ETA: MU212 MNLPG 0225/0605 (0355/0725)</b> <ul style="list-style-type: none"> <li>Meet &amp; greet by your tour guide on Shanghai airport.</li> <li>Transfer to Hangzhou (The drive takes about 2.5 hours.)</li> <li>Transfer to hotel and check in.</li> </ul>	X/X/D	5* Hangzhou Jukaman Radisson Hotel -36 Sqm  Or similar
D2	Hangzhou - Wuzhen  Bus	<ul style="list-style-type: none"> <li>Breakfast at hotel</li> <li>Visit <b>[West Lake Cruise](Tickets included)</b></li> <li>Visit <b>[West Lake Su Causeway]</b> it is the site of one of the Ten Scenes of West Lake, "Spring Dawn at Su Causeway."</li> <li>Visit <b>[Meijiawu and pick tea taste Longjing]</b></li> <li>Transfer to Wuzhen</li> <li>Night Visit <b>[ The West Scenic Area of Wuzhen ]</b></li> <li>Overnight at a top - class resort hotel in Wuzhen- <b>Dishang Resort Hotel</b></li> <li>Transfer to hotel.</li> </ul>	B/L/D	Dishang Resort Hotel-42 Sqm  Or similar



D3	Huzhou - Shanghai  Bus	<ul style="list-style-type: none"> <li>● Breakfast at hotel</li> <li>● Transfer to <b>[Xinshi Ancient Town]</b></li> <li>● Experience <b>Hanfu + Chinese Intangible Cultural Heritage</b></li> <li>● <b>DIY+Enjoy Delicate Tea Dishes</b></li> <li>● Visit <b>[Chenghuangmiao Business District]</b></li> <li>● Visit <b>[The Bund]&amp;[Nanjing Road Pedestrian Street]</b></li> <li>● Transfer back to hotel and check in</li> </ul> <b>Upgrade a Lunch of Hot Pot+BBQ Buffet</b>	B/L/D	5*Cordis Shanghai Seaworld-42 Sqm  Or similar
D4	Shanghai  Air/Bus	<ul style="list-style-type: none"> <li>● Breakfast at hotel</li> <li>● <b>Option Tour1-Free</b></li> <li>● Visit <b>[Shanghai Disney Town]</b></li> <li>● Visit <b>[Lujiazui Financial District Skywalk]</b></li> <li>● Visit <b>[Shanghai Xintiandi]</b></li> <li>● Visit <b>[Starbucks Reserve Roastery]</b></li> </ul> <b>Option tour2-USD120/PAX</b> <ul style="list-style-type: none"> <li>● Enjoy the <b>[Shanghai Disneyland]</b></li> </ul> <p>20:30 after the fire works, transfer back to hotel. *Enjoy lunch and dinner by own inside Disneyland, driver guide not go inside together.</p> <ul style="list-style-type: none"> <li>● Transfer back to hotel</li> </ul>	B/X/X	5*Cordis Shanghai Seaworld-42 Sqm  Or similar
D5	Shanghai - Manila  Bus/Air	<ul style="list-style-type: none"> <li>● Breakfast at hotel and check out</li> <li>● Transfer to airport and fly back to sweet home</li> </ul> <b>ETA: MU211 PVGMNL 2340/0340+1</b>	B/X/X	Sweet home

### Quotation-Based on 20PAXs

Travel Date	Adults (Twin sharing)	Single Supplement	Child no bed (2-6 years old)	Tip
<b>OCT25-29,2025</b>	<b>899USD/PAX</b>	<b>USD200/PAX</b>	<b>849USD/PAX</b>	<b>USD25/PAX</b> <b>USD5/PAX/DAY*5=USD25/PAX</b>
<b>OCT26-30,2025</b>	<b>899USD/PAX</b>		<b>849USD/PAX</b>	

#### Remarks:

1. 15 Adult based on 29 seats medium bus,20 Adult based on 39 seats medium bus.
2. Pls kindly noted that based on local rule, Kids 6 years old and above,should with bed,quotation same as adult.

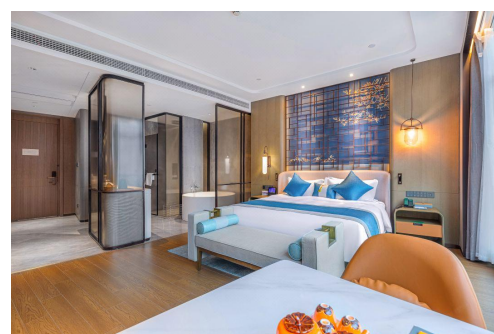
**Option Tour 2(Excluded)- USD120/PAX Shanghai Disneyland**



## Flight Information

FLIGHT NO.	FROM	TO	ETD	ETA
MU212	MNL	PVG	0225/0355	0605/0725
MU211	PVG	MNL	2340	0340+1

INCLUSIONS	EXCLUSIONS
<ul style="list-style-type: none"> <li>● International airfare and Airport tax &amp; Terminal fee.</li> <li>● 23KG(1pc) checked-in luggage and 7KG hand carry-on luggage.</li> <li>● Private bus with English speaking tour guide(1 bus,1 tour guide)</li> <li>● Sightseeing tours as specified above included all entrance fee needed</li> <li>● 4 nights' room accommodation at choice hotel with daily hotel breakfast base on twin sharing ( No extra bed)</li> <li>● One complimentary bottle of water per person per day</li> <li>● Meals:4 Breakfasts at hotel + 2 Lunches+3 Dinners</li> </ul>	<ul style="list-style-type: none"> <li>● Expenses of a personal nature like telephone calls, mini bar, etc.</li> <li>● Single supplement</li> <li>● China Individual Visa</li> <li>● Travel insurance</li> <li>● Tips for driver and guide: USD25/PAX(collected with tour fee)</li> <li>● The Philippine Travel tax: USD30/PAX(collected with tour fee)</li> <li>● China Group Visa: USD40/PAX(collected with tour fee)</li> <li>● Option Tour2-120USD/PAX</li> </ul>
<p><b>Important Notice</b></p> <p>*Down payment: <b>Non-Refundable/Unchangeable USD300/PAX</b> in 3 days once confirmed to join in</p> <p>*The rate based on twin sharing, less triple sharing rooms, if triple room available, we will arrange one twin bed room with one single bed room (the person use single bed room will require single supplement)</p>	

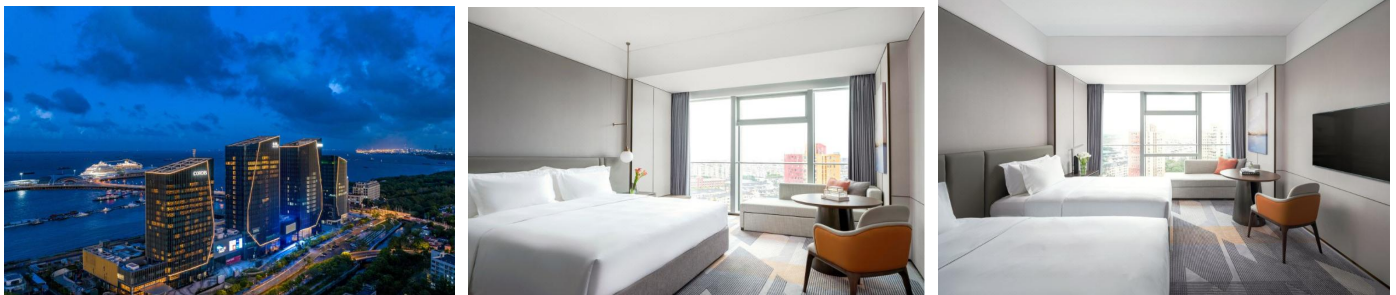


5\* Hangzhou Jukaman Radisson Hotel-36 Sqm





Dishang Resort Hotel-42 Sqm



5\* Cordis Shanghai Seaworld-42 Sqm