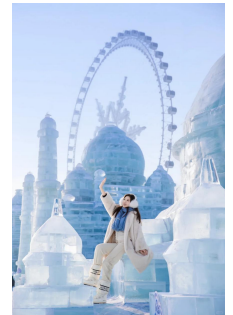
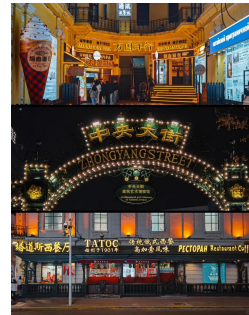
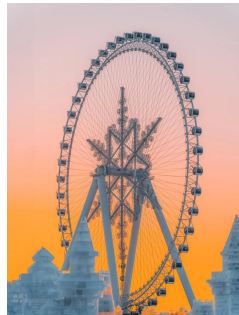


## Harbin+Snow Town 6D5N Tour -Non Shopping tour- 5\* Hotel -Group Visa

Group1:21DEC-26DEC,2025

Group 2:22DEC-27DEC,2025



DATE	CITY	ITINERARY	MEAL	HOTEL
D1	Manila - Beijing - Harbin  AIR/BUS	<p><b>ETA: CA180 MNL-PEK 0620-1055</b> <b>CA1623 PEK-HRB 1300-1455</b></p> <ul style="list-style-type: none"> <li>● Fly to PEK Airport, and transfer to Harbin airport</li> <li>● Meet &amp; Greet by your tour guide on HRB airport.</li> <li>● Visit <b>[Cotton-Padded Clothing Store]</b></li> <li>● Visit <b>[Qunli Music Square]</b></li> <li>● Visit <b>[Saint Sophia Cathedral Square in Harbin]</b></li> <li>● Transfer to hotel and check in.</li> </ul>	X/X/D	<p>5*Steigenberger Harbin-33 ㎡</p> <p>5*Crowne Plaza-33 ㎡</p> <p>5*Sheraton Hotel-43 ㎡</p> <p>Or Similar</p>
D2	Harbin - Yabuli - Snow Town  Bus	<ul style="list-style-type: none"> <li>● Breakfast at hotel and check out</li> <li>● Passing through Yabuli(About 3.5H)</li> <li>● you can choose the <b>Option Tour:</b> <b>[Yabuli Horse-Drawn Sleigh Ride + Ten-Mile Gallery + Songhua River Cable Car (One-Way) +1 hawthorn candy skewer]----USD99 /PAX</b> 自费: 亚布力马拉爬犁+十里画廊+松花江缆车(单程)+赠送冰糖葫芦每人一支</li> <li>● Transfer to <b>[Snow Town]</b> (admission ticket + shuttle bus included)(About 2.5H)</li> <li>● Visit <b>[XueYun Street]</b></li> <li>● Transfer to hotel and check in</li> </ul>	B/L/D	<p>Snow Town:</p> <p>Wanjia Forest Hot Spring Hotel</p> <p>Xueyun'ge Hotel</p> <p>Or Similar</p>
D3	Yabuli - Mudanjiang  Bus	<ul style="list-style-type: none"> <li>● Breakfast at hotel and check out</li> <li>● Visit <b>[Snow Town stone tablet]</b></li> <li>● Visit <b>[Bangchui Mountain wooden boardwalk]</b></li> <li>● Free activities in Xue Xiang.</li> <li>● After lunch, head to Mudanjiang (About 6H)</li> <li>● Transfer to hotel and check in</li> </ul>	B/L/D	<p>5*Holiday Inn Mudanjiang-29 ㎡</p> <p>Or Similar</p>

# CHINA

Welcome to China



D4	Mudanjiang - Hengdaohezi - Harbin  Bus	<ul style="list-style-type: none"> <li>● Breakfast at hotel and check out</li> <li>● Transfer to Hengdaohezi(About 1H)</li> <li>● Visit [Russian-style Old Street]</li> <li>● Visit [Middle East Railway Church Museum]</li> <li>● Visit [Oil Painting Village]</li> <li>● Transfer to Harbin(About 3H)</li> <li>● Transfer to hotel and check in</li> </ul>	B/L/D	5*Steigenberger Harbin-33 m <sup>2</sup> 5*Crowne Plaza-33 m <sup>2</sup> 5*Sheraton Hotel-43 m <sup>2</sup> Or Similar
D5	Harbin  Bus	<ul style="list-style-type: none"> <li>● Breakfast at hotel</li> <li>● Visit [Harbin Polarpark] (Including Ticket)</li> <li>● Visit [Ice and Snow World] (Including Ticket)</li> </ul> <p>(The Ice and Snow World is expected to open after Dec20th. If it not open outdoors, it will be change to Dreamy Ice and Snow Pavilion, refund USD15/PAX)</p> <ul style="list-style-type: none"> <li>● Enjoy shopping at [Zhongyang Pedestrian Street]</li> <li>● Transfer to hotel</li> </ul>	B/L/D	Same as above
D6	Harbin - Beijing - Manila  Air/Bus	<ul style="list-style-type: none"> <li>● Breakfast at hotel</li> <li>● Fly to PEK Airport and transfer to Manila.</li> <li>● Sweet Home</li> </ul> <p>ETD: CA1644 HRB-PEK 1140-1400 CA179 PEK-MNL 1900-0005+1</p>	B/X/X	Sweet Home

## QUOTATION

Travel Date	Adults (Twin sharing)	Single Supplement	Child no bed (2-6 years old)	Tip
<b>21DEC-26DEC,2025</b>	<b>USD1488/PAX</b>	<b>USD400/PAX</b>	<b>1250USD/PAX</b>	<b>USD30/PAX</b>
<b>22DEC-27DEC,2025</b>				

### Remarks:

1. The rate based on 37 seat Bus. More than 29 paxs, 45 seat Bus will be provided.

2. Excluded Option Tour-**USD99/PAX**:

**Yabuli Horse-Drawn Sleigh Ride + Ten-Mile Gallery +Songhua River Cable Car (One-Way) +1 hawthorn candy skewer**

## Flight Information

FLIGHT NO.	FROM	TO	ETD	ETA
CA180	MNL	PEK	06:20	10:55
CA1611	PEK	HRB	17:30	19:30
CA1644	HRB	PEK	11:40	14:00
CA179	PEK	MNL	19:00	00:05+1

INCLUSIONS	EXCLUSIONS
<ul style="list-style-type: none"> <li>● International and domestic airfare</li> <li>● Airport tax &amp; Terminal fee.</li> <li>● 23KG(1pc) checked-in luggage and 5KG hand carry-on luggage.</li> <li>● Private bus with English speaking tour guide(1 bus,1 tour guide)</li> <li>● Sightseeing tours as specified above included all entrance fee needed</li> <li>● 5 nights' room accommodation at choice hotel with daily hotel breakfast base on twin sharing ( No extra bed)</li> <li>● One complimentary bottle of water per person per day</li> <li>● Meals:5 Breakfasts at hotel + 4 Lunches+5 Dinners Upgrade Meals: Hotpot and BBQ</li> </ul>	<ul style="list-style-type: none"> <li>● Expenses of a personal nature like telephone calls, mini bar, etc.</li> <li>● Single supplement</li> <li>● China visa</li> <li>● Travel insurance</li> <li>● Tips for driver and guide: USD30/PAX(collected with tour fee)</li> <li>● The Philippine Travel tax: USD30/PAX(collected with tour fee)</li> <li>● China Group Visa USD40/PAX(collected with tour fee)</li> <li>● <b>Option Tour: USD99/PAX</b> [Yabuli Horse-Drawn Sleigh Ride + Ten-Mile Gallery + Songhua River Cable Car (One-Way) +1 hawthorn candy skewer]</li> </ul>

### Important Notice

\*Rate are in US dollar per person unless specified.

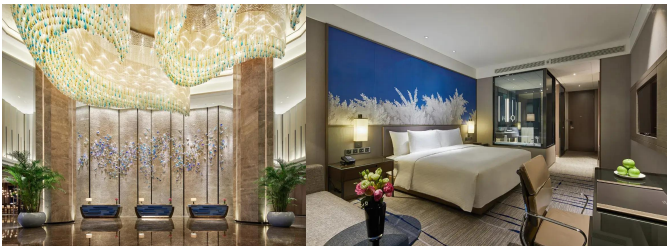
\*Down payment: **Non-Refundable/Unchangeable USD500/PAX** in 3 days once confirmed to join in

\*The rest payment will pay one month before departure

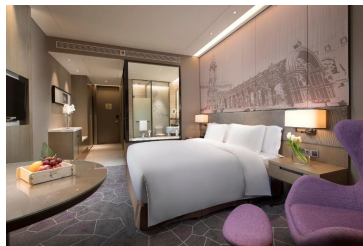
\*The rate based on twin sharing, less triple sharing rooms, if triple room available, we will arrange one twin bed room with one single bed room (the person use single bed room will require single supplement)

\*First come First serve basis.

By proceeding to make a deposit of the required amount, it is assumed that you have read,clearly understood, and accepted the conditions set herein. JSC TRAVEL AND TOURS reserves the right to have the final interpretation regarding the rules of this contract.



5\*Steigenberger Harbin-33 m<sup>2</sup>



5\*Crowne Plaza-33 m<sup>2</sup>



5\*Sheraton Hotel-43 m<sup>2</sup>



5\*Xueyun'ge Hotel



5\*Holiday Inn Mudanjiang-29 m<sup>2</sup>

