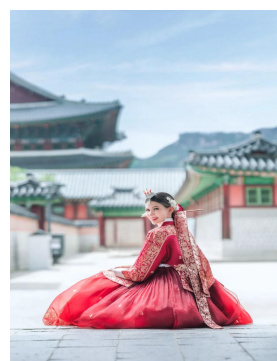
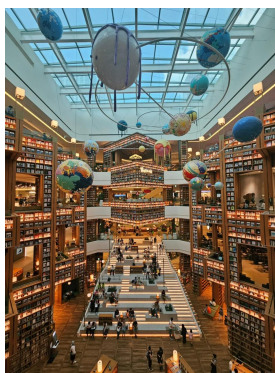


# SOUTH KOREA

Welcome to South Korea



## Seoul Fun 5D4N Tour



| DATE | CITY  | ITINERARY  | MEAL  | HOTEL  |
|------|---|--|-------|--|
| D1   | Manila<br>-<br>Incheon<br>-<br>Suwon<br>-<br>Seoul<br><br>AIR/BUS | <ul style="list-style-type: none"> <li>➤ <b>ETA : Z2884 MNL-ICN 07:00-11:55</b></li> <li>● Fly to Incheon. Meet &amp; Greet by your tour guide at airport.</li> <li>● Visit <b>[Suwon Hwaseong Fortress]</b></li> <li>● Visit <b>[Hwaseong Haenggung]</b></li> <li>● Visit <b>[Suwon Starfield Library]</b></li> <li>● Transfer to hotel and check in</li> </ul> | X/L/D | 3*Hangang Gold Hotel(20sqm)<br>or<br>3*Hotel Aventree Yeouido(22sqm)<br>Or similar |
| D2   | Seoul<br>-<br>Ansan<br>-<br>Chuncheon<br>-<br>Seoul<br><br>BUS    | <ul style="list-style-type: none"> <li>● Breakfast at hotel</li> <li>● Visit <b>[Kyochoon DIY 1991 School (Experience DIY Fried Chicken)]</b> (Includes samples for tasting and one serving of boneless chicken per person)</li> <li>● Visit <b>[Nami Island + Return Ferry Ride]</b></li> <li>● Transfer to hotel</li> </ul>                                    | B/X/D | Same as above  |

# SOUTH KOREA

Welcome to South Korea



|    |   |  |       |               |
|----|---|--|-------|---------------|
| D3 | Seoul<br>BUS                                    | <ul style="list-style-type: none"> <li>● Breakfast at hotel</li> <li>● Visit <b>[Gyeongbokgung]</b>(Include hanbok wearing, Exc. Hairdo &amp; Makeup. *Closed Every TUE, replace to Changdeokgung)</li> <li>● Visit <b>[Gwanghwamun Square + Passby bluehouse ]</b></li> <li>● Visit <b>[National Folk Museum]</b>(*Closed Every TUE)</li> <li>● Visit <b>[Insadong Antique Street]</b></li> <li>● Visit <b>[ Dongdaemun DDP Plaza + Dongdaemun]</b></li> <li>● Transfer to hotel</li> </ul> | B/L/X | Same as above |
| D4 | Seoul<br>BUS                                    | <ul style="list-style-type: none"> <li>● Breakfast at hotel</li> <li>● Experience <b>[Gimbap DIY + Hanbok Wearing]</b></li> <li>● <b>Compulsory Shopping Stop : Ginseng Shop , Cosmetic Shop , Healthy Liver Shop</b></li> <li>● Visit <b>[Myeongdong]+[Duty Free Shop]</b></li> <li>● Transfer to hotel</li> </ul>  | B/L/X | Same as above |
| D5 | Seoul<br>-<br>Incheon<br>-<br>Manila<br>BUS/AIR | <ul style="list-style-type: none"> <li>● Breakfast at hotel &amp; check out</li> <li>● Visit <b>[Local Product Shop]</b> (Depending on the flight)</li> <li>● Transfer to airport , fly back to sweet home.</li> </ul> <p>➤ <b>ETD: Z2885 ICN-MNL 13:00-16:15</b></p>  | B/X/X | Sweet home    |

## QUOTATION Based on 25 Paxs

| Travel Date             | Adults<br>(Twin sharing) | Child no bed<br>(2-11 years old) | Single Supplement | Tip              |
|-------------------------|--------------------------|----------------------------------|-------------------|------------------|
| <b>27OCT-31OCT,2025</b> | <b>USD599/PAX</b>        | <b>USD509/PAX</b>                | <b>USD200/PAX</b> | <b>25USD/PAX</b> |
| <b>30OCT-03NOV,2025</b> | <b>USD649/PAX</b>        | <b>USD555/PAX</b>                |                   |                  |
| <b>29NOV-03DEC,2025</b> | <b>USD599/PAX</b>        | <b>USD509/PAX</b>                |                   |                  |
| <b>05DEC-09DEC,2025</b> | <b>USD599/PAX</b>        | <b>USD509/PAX</b>                |                   |                  |
| <b>19DEC-23DEC,2025</b> | <b>USD649/PAX</b>        | <b>USD555/PAX</b>                |                   |                  |
| <b>21DEC-25DEC,2025</b> | <b>USD749/PAX</b>        | <b>USD638/PAX</b>                |                   |                  |
| <b>31DEC-04JAN,2026</b> | <b>USD749/PAX</b>        | <b>USD638/PAX</b>                |                   |                  |
| <b>01JAN-05JAN,2026</b> | <b>USD699/PAX</b>        | <b>USD595/PAX</b>                |                   |                  |

### Remarks:

1. 25paxs based on 45 seats Bus with English speaking tour guide.
2. Pls kindly noted that based on local rule, Kids 12 years old and above, should with bed.



# SOUTH KOREA

Welcome to South Korea



3. If the mentioned hotel unavailable for our tour date, we might change to similar standard hotel.
4. Meals Cuisine: Ginseng Chicken (Michelin) / Korean BBQ Buffet / Tteokbokki Hot Pot Buffet. Meal as above mentioned, sequence subject to change based on local condition.

5. **This is Mandatory Shopping Stop tour.**

1) Ginseng Shop 2) Cosmetic Shop 3) Healthy Liver Shop

---Pls kindly noted that this tour package has included **Mandatory Shopping Stop**. If based on non compulsory, **USD300/PAX will be required.**

| INCLUSIONS   | EXCLUSIONS  |
|--|---|
| <ul style="list-style-type: none"> <li>● International airfare Airport tax &amp; Terminal fee.</li> <li>● 20KG(1pc) checked-in luggage and 7KG hand carry-on luggage.</li> <li>● Private bus with English speaking tour guide(1 bus, 1 tour guide)</li> <li>● Sightseeing tours as specified above included all entrance fee needed</li> <li>● 4Nights' accommodation at choice hotel with daily hotel breakfast base on twin rooms</li> <li>● Meals: 4 Breakfasts at hotel+ 3 Lunches+2Dinners</li> </ul> | <ul style="list-style-type: none"> <li>● Expenses of a personal nature like telephone calls, mini bar, etc.</li> <li>● Single supplement</li> <li>● Korea Visa</li> <li>● Travel insurance</li> <li>● Tips for driver and guide: USD25/PAX(collected with tour fee)</li> <li>● The Philippine Travel tax: USD30/PAX(collected with tour fee)</li> </ul> |

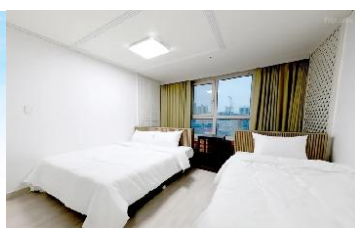
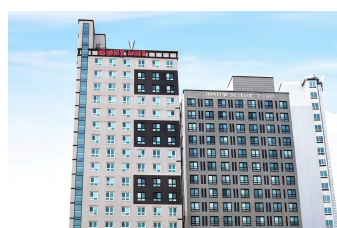
**Important Notice**

\*Down payment: **Non-Refundable/Unchangeable USD300/PAX** in 3 days once confirmed to join in

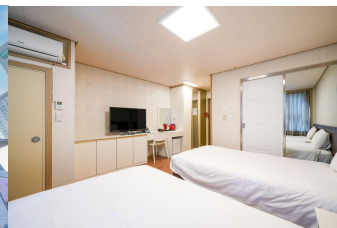
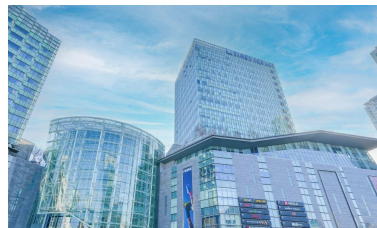
\*The rest payment will pay one month before departure

\*The rate based on twin sharing, less triple sharing rooms, if triple room available, we will arrange one twin bed room with one single bed room (the person use single bed room will require single supplement)

## Hotel details



**3\*Hangang Gold Hotel(20sqm)-Twin Room**



**3\*Hotel Aventure Yeouido(22sqm) -Twin Room**